

Presto! PhotoAlbum Context Help

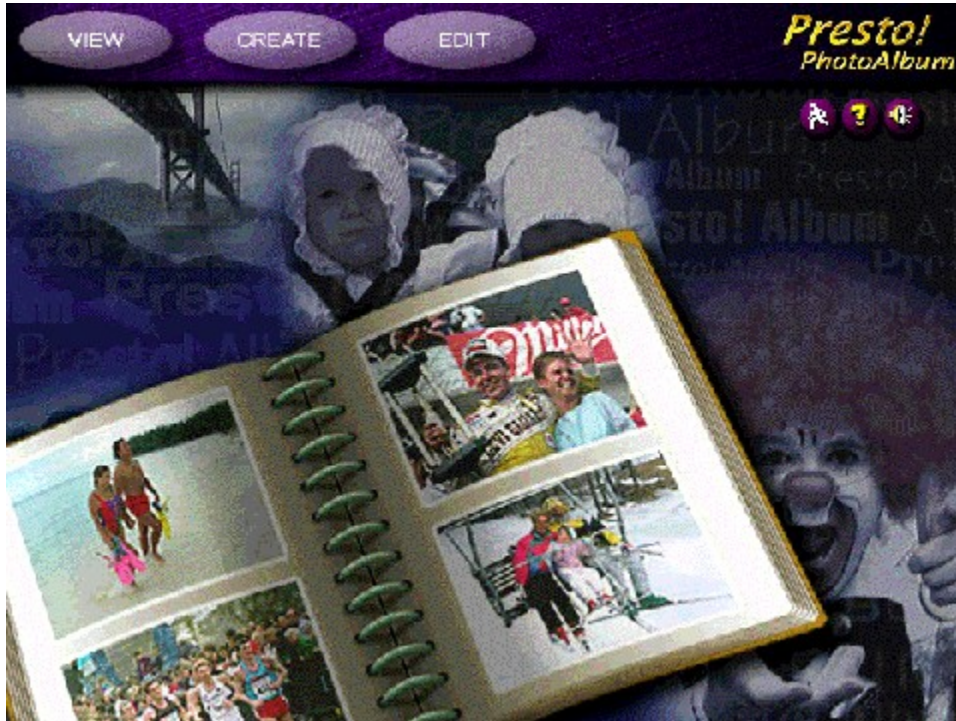
Enjoy your photos with an electronic album in Presto! PhotoAlbum!!

You will get simple explanations about the functions in Presto! PhotoAlbum from the on-line help. For more detailed information, please refer to your User's Manual.

[Presto! PhotoAlbum](#)

Starting Presto! PhotoAlbum

When you start Presto! PhotoAlbum, the opening screen appears with several buttons for your selection.



Note:

If you did not use "Typical" setup when installing the software, to utilize all the attached libraries of album template, frame, texture, ornament, etc., please insert the Presto! PhotoAlbum CD-ROM into your CD-ROM drive before running the software.

Related topics:

[Opening an Album](#)

[Creating a New Album](#)

[Enjoying an Album](#)

Opening an Album

A pre-existing album can be recalled for editing when you want to add or remove some photos in it or make some changes to the pages.

To recall an existing album for editing, you should select the EDIT button in the opening screen. When the *Select An Album* dialog box appears, locate the album you want to edit.

1. Select the category that the album you want to locate belongs to from the category icons at the left of the dialog box.

2. From the shrunken copies of the albums, select the one you want to recall.

The lower part of the dialog box displays the information about the page number, last saved date and the description of the album. You may click the Play button to listen to the sound or music attached to the album, if any. Drag the album icon to the trash-can if you want to delete an album.

3. Click on the [OK] button.

Creating a New Album

Click the CREATE button in the opening screen for creating a new album. The screen changes with the following buttons:



When you want to create a new album, you should define the book style of the album; that is, the appearance of the album. The appearance of an album indicates the format of the book, the kind of rings fastening the pages, etc.

Related Topics:

[Using an Album Template](#)

[Defining New Album Format](#)

Using an Album Template

Presto! PhotoAlbum provides some sample albums for using as predefined templates of book styles. Also, if you have composed an album and saved it in your disk before, you can use its format as a template for creating a new album.

The format of the selected album will be copied with empty photo cells (frames) for entering new photos.

To compose your own album, you may select one of the predefined templates or pre-existing albums and change its contents as you wish, or customize a totally new album by yourself.

To select a predefined template or pre-existing album:

1. Click the TEMPLATE button from the CREATE options. A dialog box appears for locating an album used as template:
2. Select the category that the album you want to locate belongs to from the category icons at the left of the dialog box.
3. From the shrunken copies of the albums, select the one you like or closest to your expectation.

The lower part of the dialog box displays the information about the page number, last saved date and the description of the album. You may click the Play button to listen to the sound or music attached to the album, if any. Drag the album icon to the trash-can if you want to delete an album.

4. Click on the [OK] button or double click on the selected album icon.

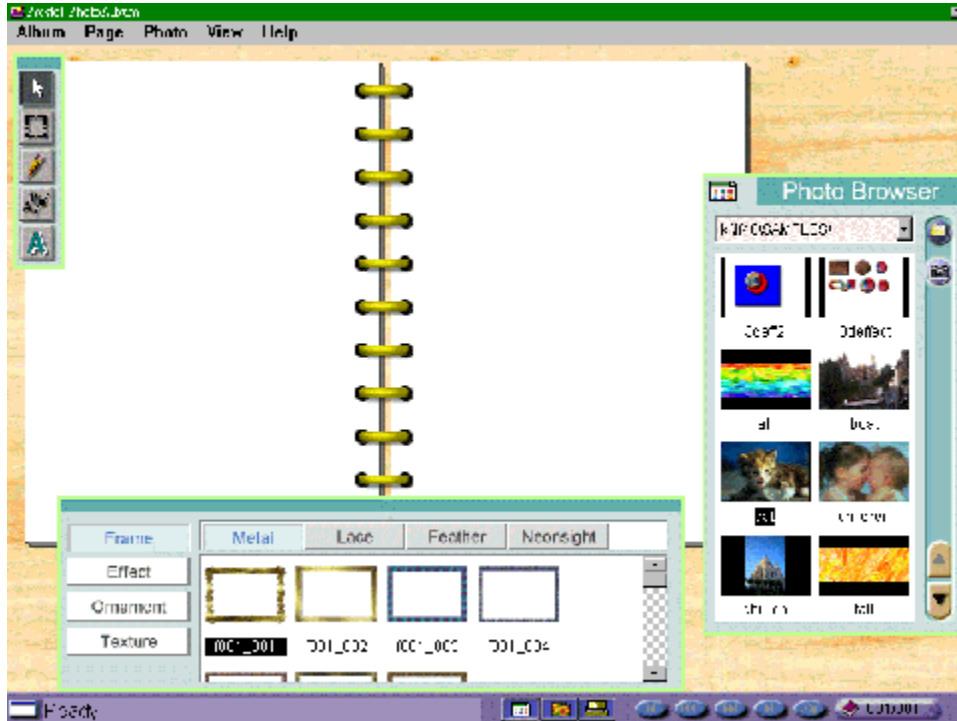
Defining New Album Format

If you want to create a totally new album without using any predefined template or pre-existing album format, click on the CUSTOM button from the CREATE options. A dialog box appears for selecting the book style.

1. When the Book Style button is depressed, you may select a book style for the new album.
2. Click on the Ring Style button to select a ring style for fastening the pages in the album.
3. Click on the Background button to select a background pattern for the desktop around the album.
3. Click on the Preview button to display a preview according to your selection in the preview window.
4. Click the OK button.

Editing the Albums

After you have specified a book style for creating a new album, or selected an existing album for editing, the editing screen will appear with the first page of the album.



Related Topics:

[Menus and Commands](#)

[Loading the Photos](#)

[Using the Tools](#)

[Decorating the Album](#)

Menus and Commands

There are several pull-down menus located on the menu bar. Each menu contains a list of commands to execute special functions for image processing.

Choose a menu from the following list to view the command function under it.

Album

Page

Photo

View

Help

Album Menu

The following commands are included in the *Album* menu:

Put All Photos

Save

Save As

Deliver

Print

Mute

Properties

Restart

Exit

Put All Photos

You can add all the photos, by the alphabetical order of their file names, in the Photo Viewer into the album at one time with one simple step. After you have defined the frame style(s) for all the pages, open the *Album* menu and select the *Put All Photos* command. The photos will be inserted automatically and the number of pages will match that of the photos according to the format of album.

Note:

If your Presto! PhotoAlbum is a bundled version, the maximum page number for an album may be limited to 12.

Save

After an album has been created, it should be stored for later usage and editing.

Open the *Album* menu and select the *Save* command. The album is saved with its name and category specified in the *Album Information* dialog box.

Save As

If you have not specified a name and category for the album or you want to save the album with another name or category, you may choose the *Save As* command in the *Album* menu. The *Album Information* dialog box will be invoked for your specification to the album, and the album will be saved immediately after you click on [OK].

Deliver

After an album is edited complete, you may share the album with others or deliver it by diskettes to playback with Presto! PhotoAlbum's playback program on another computer. The *For Playback* option of *Deliver* command can convert the current album to an execution file with all the files needed for independent playback by the playback program.

The *For Internet* option of *Deliver* command can convert the album into HTML format and provide all the files needed for playing back on an Internet browser so you can share the album with remote users.

To deliver an album:

1. In the editing screen, open the *Album* menu and select the *Deliver* command.
2. Choose the *For Playback* or *For Internet* option from the pop-up sub-menu.
3. A message box appears containing the description of the option. Read the message and click on [OK] to continue.
4. When the *Choose Directory* dialog box appears, locate the directory you want to send the album to, or enter a new folder name to hold all the files needed for playing back.
5. Click on the [OK] button.

A new folder containing all the files needed for playing back will be created with the name you typed. If you have selected the *For Playback* option, you may execute the **.EXE** file directly to playback the album. If you have used the *For Internet* option, the file named **DEFAULT.HTM** (or **VIEWER.HTM**) is the HTML format file you should use for enjoying the album.

Related Topic:

[Sharing the Album on Internet](#)

Print

The *Print* command under the *Album* menu provides users with different options for printing and output formats. To print a page:

1. Open the *Album* menu and choose *Print*. The *Print* dialog box appears.

In default, the *Printer* tab is active. The information about the current printer, port configuration and page orientation setups are displayed in the upper part of the dialog box. These can only be changed through the commands in the *Setup* dialog box. If you want to change any of these items, click on [Setup] at the bottom.

2. Enter the number of copies you want to print in the *Copies* text box.
3. Select the orientation of the paper as portrait or landscape.
4. The *Set Margin* section allows you to set the top and left margins. You may also choose to print the page horizontally or vertically on the middle of a page.

You can change the position's coordinates and units from the *Unit* pull down list box.

5. In the *Quality* section, select *Normal*, *Medium* or *High* option you want to print with. The higher printing quality, the slower the printing speed.

The resolution for *Normal* printing is 640x480 pixels printed with album rings, or 600x400 pixels without rings. The printing resolution for *Medium* quality is 1200x800 without album rings, and that for *High* quality 2400x1600.

6. If you have selected *Normal* resolution, you may decide whether to print the album rings by enabling or disabling the *Ring* option.
7. If you want to rescale the page while printing, select the *Rescale* tab to make related setting.
8. Click on the *Fit In Page* check box if you want to rescale the page in relation to the size of the paper used.

If you need to change the size of the paper, select the correct size from the *Paper Size* list box.

9. You can set the scaling ratio by entering its size in the *Target Image* section or by entering the X (horizontal ratio) and Y (vertical ratio) values in the *Rescale Factor* section. You can also specify the scaling ratio by dragging the slider between the 10% and maximum rescale proportion indicated.

If you have enabled the *Keep Ratio* option, you can enter either the width or the height of the rescaled page. The software will automatically determine the other value for you.

If you have disabled the *Keep Ratio* option, you have to enter both the width and height to rescale the page. If the values you enter are not proportional, the rescaled page will be distorted.

10. Enter the horizontal and vertical resolutions of printing in the *Resolution* text boxes.
11. Click on the [OK] button to print; click on the [Cancel] button to abandon all the changes and return to the editing screen without printing.

Mute

Executing the *Mute* command in the *Album* menu turns on or off the sound effect generated from operation in the software. This function is the same as clicking the Sound Effect On/Off button in the opening screen.

When a check mark "" appears at the left of the command, the sound effect is turned off.


Properties

When you select the *Properties* command from the *Album* menu, the *Album Information* dialog box appears.

1. Enter a name for the new album in the *Album Name* text box.
2. Select a category that the new album should belong to in the *Album Category* pull-down list, or type in a new category name directly.


The default category for holding your album is “My Album.” You may name a new category according to the content of your album.

3. In the *Information* text box, you may type in the description about the new album for identifying the content in it.
4. If you want to add some music to the album so that a background music can be played


when you are enjoying the album, click on the Music  button.

A dialog box appears for selecting a wave or midi file to attach to the album. Locate the file and click on [OK] to attach the music.

5. If you want to record some sound effects or a narration about the album, click on the

Record  button. When the *Audio Format* dialog box appears, set the sound elements for the format of your sound file.

After you click [OK], you may start to record with your microphone. When you finish recording, click the Record button again to stop recording.

You may click the Play  button to listen to the result of recording.

6. Click on the [OK] button to save the album information.

Restart

The *Restart* command enables you to go back to the opening screen aroused by Presto! PhotoAlbum program.

Exit

The *Exit* command enables you to quit the software.

Page Menu

The editing commands under the *Page* menu are used for changing the pages.

New a Blank Page

Repeat Current Page

Copy Page

Insert Page

Delete Page

Clear Page

Next Page

Previous Page

Cover Page

Last Page

Goto/Find Page

Wall Paper

Background Music

New a Blank Page

The *New a Blank Page* command allows you to insert a blank page after the current page. To add a new page after the current page, open the *Page* menu and select *New a Blank Page*.

Repeat Current Page

The *Repeat Current Page* function enables you to insert a new page after the current page and reproduce the content of current page onto it. When you execute the *Repeat Current Page* command, a new page appears on screen containing the same content as that in the page before executing the command.

Copy Page

The *Copy Page* function enables you to make a copy of the current page and place it on the Windows clipboard. The original page is unaffected by the *Copy Page* command. You could use the *Insert Page* command to move the content last copied on the clipboard to another page. Only the last copied content resides in the clipboard. To copy a page:

1. Turn to the page you want to copy its content.
2. Open the *Page* menu, and click on the *Copy Page* command. A copy of current page then resides in the clipboard.

Insert Page

The *Insert Page* command can insert a new page before the current page and place the content of a page on Windows clipboard onto it. The command works only when there is already a content in the clipboard. To insert a new page with clipboard content, open the *Page* menu and select *Insert Page*.

Delete Page

The *Delete Page* command permanently removes the content of the current page and the page itself. After executing the *Delete Page* command, the current page is removed and the next page appears automatically.

Clear Page

The *Clear Page* command removes the content of the current page, including the ornament objects and the photos with their frames and shadows, but the page itself still remains.

Next Page

The *Next Page* command can locate the page after the current one in the album and display its content in the album page.

Previous Page

The *Previous Page* command can locate the page before the current one in the album and display its content in the album page.

Cover Page

The *Cover Page* command can locate the first page in the album and display its content in the album page.

Last Page

The *Last Page* command can locate the last page in the album and display its content in the album page.

Goto/Find Page

The *Goto/Find Page* command can locate any page you specify its page number or the page containing the photo with the specific text string you stated in the *Information* option of its *Properties* dialog box, and display its content in the album page.

To execute execute this command:

1. Select the *Goto/Find Page* command from the *Page* menu. The *Go To* dialog box pops up.
2. If you are aware of the page number you want to locate, select the *Goto Page* option and set the number in the *Page Number* text box.
3. If you want to find the photo with a specific text string in its *Information* option, select the *Find Page* option.

In the *From* text box, set the page number you want to start searching the photo.

In the *Search String* text box, type in the text string you want to use for searching the photo.

In the *Direction* option, select you want to search the pages before or after the page you have specified in the *From* text box.

4. Click on [OK].

Wall Paper

An album page can be used as the wall paper of Windows desktop background. Open the *Page* menu and select the *Wall Paper* command.

Background Music

When you want to assign a special music for the current page, select the *Background Music* command from the *Page* menu. When a dialog box pops up, select a music file to attach with the page.

Photo Menu

The *Photo* menu contains the following commands for editing photos or objects:

Cut

Copy

Paste

Duplicate

Delete

Clear Photo

Photo Tuning

Bring to Top

Send to Back

Move Forward

Move Backward

Properties

Cut

The *Cut* command removes an object (a photo or object) and places it on the Windows clipboard. You can use the *Paste* command to place the object last cut and put on the clipboard back onto the album, or paste it in another application. Only the last cut content resides in the clipboard. To cut an object, do the following:

1. Select the object you want to remove and place on the Windows clipboard.
2. Open the *Photo* menu and click on the *Cut* command. The select object is removed.

Note:

The keyboard shortcut to execute the Cut command is [Ctrl]+[X].

Copy (Photo)

The *Copy* function enables you to make a copy of the selected object and place it on the Windows clipboard. The original object is unaffected by the *Copy* command. You could use the *Paste* command to move the object last copied on the clipboard to the same or another page. Only the last copied object resides in the clipboard. To copy a page:

1. Select the object you want to copy.
2. Open the *Photo* menu, and click on the *Copy* command. A copy of the selected object then resides in the clipboard.

Note:

The keyboard shortcut for copying the image is [Ctrl]+[C].

Paste

The *Paste* command pastes the content which was last cut or copied to the clipboard onto the current page. The command works only when there is already a content in the clipboard. To paste, do the following:

1. Open the *Photo* menu, and click on the *Paste* command.
A selection outline appears containing the content of the clipboard.
2. Move the pointer into the selection outline.
3. Drag the pasted object to the location on the page where you want to place the object.
4. Click the left mouse button outside of the selection outline to paste the object.

Note:

The keyboard shortcut to execute the *Paste* command is [Ctrl] + [V].

Duplicate

The *Duplicate* function enables you to reproduce the selected object on current page. To execute the *Duplicate* command, first select the object you want to duplicate, and then open the *Photo* menu and click on the *Duplicate* command.

Delete (Photo)

The *Delete* command permanently removes the selected object. To execute the *Delete* command, first select the object you want to remove, and then open the *Photo* menu and click on the *Delete* command.

Clear Photo

The *Clear Photo* command removes the photo from the current selected frame.

Photo Tuning

The *Photo Tuning* dialog box provides you with a preview mode to adjust dark, midtone and light areas of a photo in hue or brightness/contrast. It enables your instant comparison between the original colors and the result of changes you may make on it.

To fine tune the colors of a photo:

1. Select the *Photo Tuning* command from the *Photo* menu. The *Photo Tuning* dialog box appears.

In the left portion of the *Photo Tuning* window, you have eight photo previews showing different effects of hue and brightness adjustments. Among them, the sample image in the middle represents your current selection taken from the eight surrounding possibilities. Before the first selection from the surrounding previews, the middle image shows the shrunken copy of the original photo.

The six previews at the top and bottom rows of the sample image reflect the hue adjustments to the *middle* photo; the two previews at the left and right of the sample photo show brightness adjustments.

2. Drag the vertical slider at the lower right of the dialog box to define the adjustment level as a slight or more pronounced adjustment.

Your setting will be immediately reflected on the left side previews.

3. Click on the preview (among the eight) which best satisfies your need. The selected preview will move into the middle position, and the surrounding previews will change according to the new sample.

Note:

You may recall the original photo as the sample image by clicking on the [Reset] button at the bottom of the dialog box.

4. The default setting for the area to be changed in the photo is *Full*, which means changes to the whole photo. If you want to change only the light, midtone, or dark area in the photo, click to select the *Highlights*, *Midtones*, or *Shadows* option respectively.
5. If you want to change the photo's brightness and contrast, click on the *Brightness/Contrast* option. The three top photo previews reflect the effects of enhancing contrast, and the three bottom ones the effects of reducing contrast. The three left photo previews reflect the effects of decreasing brightness, and the three right ones the effects of increasing brightness. Use the same procedure as in Steps 2 and 3 to adjust the brightness/contrast of the photo.
6. After you obtain a satisfying sample image, click on the [OK] button to start the process of adjustment, or click on [Cancel] to abandon the process.

Bring to Top

When two or more photos or objects are placed overlapped on a page, *Bring to Top* moves the selected photo to the very top of all the overlapping photos.

Related Topics:

[Send to Back](#)

[Move Forward](#)

[Move Backward](#)

Send to Back

When two or more photos or objects are placed overlapped on a page, *Send to Back* moves the selected photo to the very bottom of all the overlapping photos.

Related Topics:

[Bring to Top](#)

[Move Forward](#)

[Move Backward](#)

Move Forward

When two or more photos or objects are placed overlapped on a page, *Move Forward* places the selected photo over the one that is currently on top of it.

Related Topics:

[Bring to Top](#)

[Send to Back](#)

[Move Backward](#)

Move Backward

When two or more photos or objects are placed overlapped on a page, *Move Backward* places the selected photo under the one that is currently at the lower level of it.

Related Topics:


[Bring to Top](#)

[Send to Back](#)


[Move Forward](#)

Properties


The *Photo Info* dialog box invoked by the *Properties* command under the *Photo* menu allows you to enter text about the photo or assign a linking action for the photo as well as add sound or music.

1. To add some music to the photo so that a background music can be played if you click the photo while enjoying the album, click on the Music  button.

A dialog box appears for selecting a wave or midi file to attach to the photo. Locate the file and click on [OK] to attach the music.

2. If you want to record some sound effects or a narration about the photo, click on the Record  button. When the *Audio Format* dialog box appears, set the sound elements for the format of your sound file.

After you click [OK], you may start to record with your microphone. When you finish recording, click the Record button again to stop recording.

You may click the Play  button to listen to the result of recording.

3. In the *Link* section, you may define an action of turning the page when the photo is clicked by the user. If the photo is clicked when the album is played back, it can be set to turn the page to the first, last, next, previous or a specific page. Enable the *Link Page* option and select the page control button to define the action or drag the slider at the right to set the page number you want to go to.
4. In the *Photo Information* option, type in the content you want to specify about the photo, i.e. the time taking the picture, the place and the event.
5. Click the [OK] button to save the properties.

View Menu

The commands provided under the *View* menu are related to the display on the editing screen. They are:

Full Screen

Hide All

Photo Browser

Toolbox

Object Pool

Status Bar

Menu and Title

Full Screen

When you select the *Full Screen* command in the *View* menu, the album page will be enlarged to the entire screen for clear observation of the editing effect, and all other screen elements will be hidden. Press the [Esc] key once to restore the editing screen.


Hide All

To hide all the palette windows on the editing screen, including the Photo Browser, Object Pool, Toolbox and status bar, open the *View* menu and select *Hide All*, or press the [Tab] key.

When a check mark appears at the left of the command, the palette windows is hidden.


Photo Browser

This command decides whether to display the Photo Browser. When a check mark appears at the left of the command, the Photo Browser is displayed.

Pressing the  button on the status bar is equivalent to executing this command.


Toolbox

This command decides whether to display the Toolbox. When a check mark appears at the left of the command, the Toolbox is displayed.

Pressing the  button on the status bar is equivalent to executing this command.

Object Pool

This command decides whether to display the Object Pool. When a check mark appears at the left of the command, the Object Pool is displayed.

Pressing the  button on the status bar is equivalent to executing this command.

Status Bar

This command decides whether to display the Status Bar. When a check mark appears at the left of the command, the Status Bar is displayed.

Menu and Title

The *Menu And Title* command in the *View* menu can hide or display the title bar and menu bar on the screen at once. This function is the same as clicking the button located at the left of the status bar.

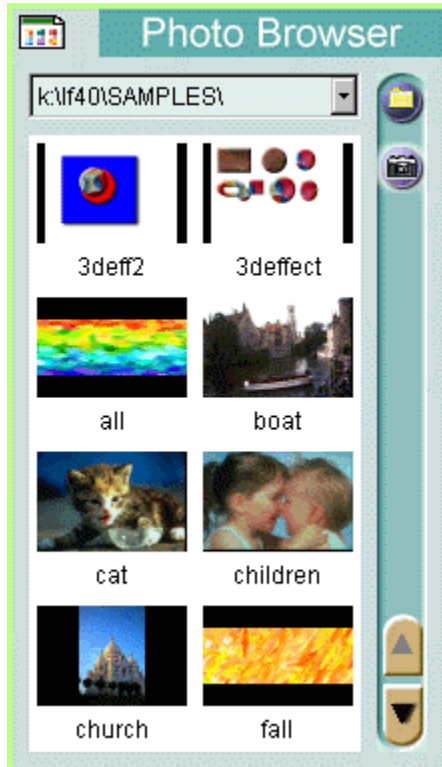
When a check mark appears at the left of the command, the title bar and menu bar are displayed.

Help Menu

Besides the messages shown on the status bar, select the *Help* menu for more information on any of the functions, commands and dialog boxes.

Loading the Photos

The Photo Browser can display thumbnail copies of the photos, with their filenames, that you want to place into the album.



- | | |
|-------------------------|--|
| Commands | Click this button to bring up several commands for inputting photos, opening photos, setting the photo display options, etc. |
| Recent Folders | Click the down arrow to display a list of folders that were recently used in Photo Browser. |
| Photo Viewer | Display the thumbnail copies of the photos included in the selected folder. |
| Change Directory | Locate a new directory to load the photos for editing. |
| Acquire | Input photos with a TWAIN hardware device. |
| Scroll Buttons | Scroll through upper or lower part in the Photo Viewer to display the photo thumbnails that are not currently visible. |

The following commands are listed in the pop-up menu when the Commands button is clicked.

Hide

Option

Change Directory

Refresh

Select TWAIN Source

Acquire

Photo

Hide (Photo Browser)

The *Hide* command removes the Photo Browser from the screen.

To display the Photo Browser again, click the  button on the status bar, or select the *Photo Browser* command from the *View* menu.

Option

The *Option* dialog box contains several options for setting the preferences on the functions performed in Photo Browser.

Number of Recently Visited Directories

This option sets the number of folders the software can recall (9 in maximum) in the Recent Folders pull-down list.

Photo Editing Program

A photo loaded in the Photo Viewer can be opened in an image processing software for further editing. This option specifies the software you want to use for editing the photos. If no specific program is selected, the system will decide an appropriate one for you.

Type in the execution file of the specific software with its path or click the [Browse] button to select it from a dialog box.

Default Saved Name After TWAIN Acquired

You may input photos from a digital camera or scanner supporting TWAIN interface installed on your system. If your TWAIN device is capable enough, you can input multiple photos at one time.

In this option, type in the first few characters for the file names of the new input photos and select the file format from the pull-down list.

The file names will automatically be assigned with 3-digit numbers after the first few characters.

For some of the file formats, you may click on the [Option] button to further specify their format options.

Apply Auto-tuning Before Saving

If you want the software to correct the colors of the input photos, enable this option.

Related Topic:

[Acquiring Photos](#)

Change Directory

If you have gathered all the photos you want to insert into the album in a specific folder or directory, you can load them into the Photo Viewer of Photo Browser to see their thumbnail copies and insert them into the album.

If the folder or directory has recently been located in Photo Browser, click the down arrow of the Recent Folders pull-down list to recall it. If not, select the *Change Directory* command or click the Change Directory button to invoke a dialog box for locating it.

Refresh

Whenever you invoke the Photo Browser and locate the directory you want to view photo files, the thumbnail photo previews are displayed according to the current file access situation in the directory. If you change the situation after the directory is explored, i.e. adding or removing some files to/from the directory, and do not refresh the information for the program, the thumbnails displayed will not reflect the latest changes. In this case you should execute the *Refresh* command in the Commands menu to update the modification.

Select TWAIN Source

This software supports the TWAIN driver interface to give you access to images from any input device with a TWAIN driver interface such as digital cameras and scanners. As long as the input device provides a TWAIN driver, it can work with the software without any problem.

Before you want to actually input photos with a digital camera or scanner, you should install it with Windows 95 by referring to its installation manual.

Before inputting any photo from your TWAIN device, you should select the TWAIN device used for inputting photos in your system.

1. Open the Commands menu and select the *Select TWAIN Source* command. A dialog box appears with all the TWAIN sources installed on your system listed in the *Sources* box.
2. From the list of the TWAIN devices, select the one you want to use and click on the [Select] button.

Related Topics:

[Acquire](#)

[Acquiring Photos](#)

Acquire

To acquire image input from a TWAIN source, open the File menu and select the Acquire command after selecting the TWAIN source. A dialog box will appear for your further operation. The dialog box varies for different devices because manufacturers design their own user interface.

Related Topics:

[Select TWAIN Source](#)

[Acquiring Photos](#)

Photo

The *Photo* command provides three options for editing a selected photo. This command is available only when there is a thumbnail copy of photo currently selected.

Open With

A photo loaded in the Photo Viewer can be opened in an image processing software for further editing. To open a photo, you may execute this option, or double click on the thumbnail copy of the selected photo.

Delete

This option deletes the selected photo.

Properties

This option displays the information about the selected photo.

Using the Tools

The tools in the Toolbox enable you to make simple artwork for decoration of the album.



Selection Arrow



Object Tool



Paintbrush



Text



Text Along Path

Selection Arrow

The *Selection Arrow* allows you to select an object and move the object to another location on the pages. An object indicates an ornament or photo with its frame and shadow (if any). You may select an object for further editing actions such as copy, duplicate, delete, etc. or change its shadow style, resize it, rotate it, and so on.

To select an object, click on the *Selection Arrow* icon in the Toolbox, move the mouse pointer to the object you want to select and click. A dotted outline will appear around the object. Click anywhere empty on the page to deselect an object.

To move an object, place the mouse pointer into a selected object and drag it to the desired position.

Object Tool



The *Object* tool allows you to resize and rotate an object on the page. Whenever an object is selected, the changes made will be applied to itself and anything attached to it, such as a frame and shadow, at the same time.

You can also move the selected object by dragging it inside the object while using the *Object* tool.

To use the *Object* tool:

1. Select the object you want to resize or rotate with the *Selection Arrow*.
2. Select the *Object* tool in the Toolbox. A rectangle with a right handle surrounding by totally nine small square nodes appears around the object.
3. If you want to resize the object, place the mouse pointer to any of the eight nodes on the rectangle and drag to the direction you want to expand the object.
4. If you want to rotate the object, drag the node on the right handle to the direction you want to rotate the object. Press and hold the [Shift] key while dragging the mouse to rotate it by 45 degree increments.
5. After you select another object or tool, the rectangle and rotating handle will be removed.

Paintbrush



This tool allows to draw lines free-handily as if you were drawing with a real paintbrush.

To draw with the paintbrush:

1. Click on the *Paintbrush* tool.
2. Double click the tool icon to invoke a dialog box for setting the options of the *Paintbrush*.
Specify the size and color of the paintbrush. Drag the Size slider to set the brush size.
Click inside the color block to change the color in the pop-up dialog box.
3. Place the mouse pointer to the point you want to start tracing your line.
4. Press and hold the left mouse button.
5. Drag the mouse pointer along the line path you want. The line appears along the cursor path as you drag.
6. Release the mouse button where you want the line to end.

Text



You can enter text anywhere on a page with the *Text* tool. The software supports all the fonts installed in Windows 95.

The *Text* tool provides options for selecting fonts, font styles, and character sizes. After inputting text, you can reshape it by changing its dimensions.

To enter the text:

1. Click on the *Text* tool.
2. Move the cursor to where you want the text to start and click. A *Font* dialog box appears.
3. Select the font, the font style, and the character size. The *Sample* box will display an example of the selection you made.
4. In the *Effects* window, select the color for the text in the *Color* option. Click inside the color block to invoke a dialog box for selecting color.
5. If you want the text character to be placed vertically, enable the *Portrait* option.
6. Enter the text in the *Text* box.
7. Click on [OK] to input the text.
8. A rectangle with eight square nodes around the text appears on the page. Drag the nodes to change the shape and size of the text.

Note:

Hold the [Shift] key while dragging the nodes on the corners to resize the rectangle as square.

9. Double click the mouse button to fix the text shape.

The text will be automatically selected for your further editing. It can be considered as an object for all editing actions.

Text Along Path



The *Text Along Path* tool allows you to insert text on the page and place the text along a defined curve path. To complete this effect, you must define a curve path and adjust the text position along the path.

To generate text along path:

1. Select the *Text Along Path* tool.
2. Move the cursor to where you want the text to start and click.
3. When the *Font* dialog box appears, enter the text as you would do when using the Text tool.
4. Select the text to be placed vertically (*upright*) or rotated according to the curve path in the *Effect* option.
5. Click on [OK] to close the dialog box.
6. Place the mouse pointer to where you want to start drawing your path.
7. Click the left mouse button to set the beginning of the path. Do not release the mouse button.
8. Drag the mouse pointer in the direction you want the curve drawn. As you drag, two control points appear and move in opposite directions from the node. The distance between the control points and the node determines the height or depth of the curve. The angle of the control points determines the curve's slope.
9. When the control points are in the desired position, release the mouse button.
10. Repeat step 7 to set the other end of the first curve segment you want to create. A second node appears and connected to the first.
11. Drag to generate two control points for this node.
12. Release the mouse button. You may drag the nodes and control points to adjust the shape of your curve segment.

If you did not drag from the nodes to generate control points in previous steps, you may hold the [Shift] key and drag from the nodes to create control points anytime.
13. Click and drag the pointer outside the nodes and control points to form another adjacent segment of curve linking with the first one. Repeat steps 10 through 12 to complete all the segments in the curve you want to create.

Before fixing the curve segments, you can click on any node to activate the control points of the curve segment connected and adjust the curve.

To remove the last node generated, hold the [Ctrl] key and click the left mouse button.

If you want to create a closed area with the curve segments, hold [Shift] and click the right mouse button to generate a new segment connecting from the last node to the first one.
14. When you are satisfied with the shape of your curve, double click the mouse button to fix the curve.

Note:

If you did not drag to generate control points for the nodes, the drawing will become a

straight line. Hence you can use this tool to produce adjacent segments of straight lines.

The text will be automatically selected along the path you defined for further editing. It can be considered as an object for all editing actions.

Decorating the Album

The Object Pool allows you to select frame style, special effect, ornament and texture to the pages for decoration. The buttons lined up horizontally are the categories available for each item.

Frame

Effect

Ornament

Texture

Adding Frames to the Album

Presto! PhotoAlbum provides various frame styles with different colors and shapes for adding into the album to hold the photos. The frame style you select will be applied to the pages in size and position according to the book style of the album.

Once you have inserted a frame onto the page, you can move, resize and rotate it with the photo it holds by the tools in the Toolbox. Look for the section *Using the Tools* for details.

If you have selected a predefined album format, you may change the frame style for individual page. If you have defined a totally new album through the CUSTOM button, you should add frames into the pages before inserting any photo.

To add frames to the pages:

1. Turn to the page you want to apply or change the frame style with the page control buttons on the status bar.
2. Click on the Frame button in the Object Pool.
3. Select the frame category from the row of category buttons, which contains the frame style you want to use.
4. Decide the frame style you want to use.
5. Drag the frame icon inside the page and release the mouse button where you want to place the frame.

Adding Effects to an Object

In Presto! PhotoAlbum, you may create various special effects of photo processing to a selected object by using the Effect function in the Object Pool. The special effects are categorized as follows:

Shadow

Transparency

Shadow

You may create shadow for a photo or ornament object with selection of different depth. Once the shadow is generated, it is attached to the object; that is, any change to the object also takes effect to the shadow.

To create shadow effect for an object:

1. Select the object you want to apply shadow with the Selection Arrow.
2. Click on the Effect button in the Object Pool.
3. Select the Shadow button from the row of category buttons.
4. Decide the depth you want to use for the object.
5. Drag the selected icon into the object and release the mouse button.

To remove the shadow of an object:

1. Select the object whose shadow you want to remove.
2. Click on the Effect button in the Object Pool.
3. Click on the Shadow button from the row of category buttons.
4. Select the first shadow icon (the one without shadow depth).
5. Drag the selected icon into the object and release the mouse button.

Transparency

The photos, ornaments and drawn objects on the album pages can be applied with different percentages of transparency to mix with its background.

To create transparency effect for an object:

1. Select the object you want to apply transparency with the Selection Arrow.
2. Click on the Effect button in the Object Pool.
3. Select the Transparency button from the row of category buttons.
4. Decide the transparent percentage needed for the object.
5. Drag the selected icon into the object and release the mouse button.

To remove the transparency of an object:

1. Select the object whose transparency you want to remove.
2. Click on the Effect button in the Object Pool.
3. Click on the Transparency button from the row of category buttons.
4. Select transparent percentage icon (0%).
5. Drag the selected icon into the object and release the mouse button.

Adding Ornaments to the Pages

Presto! PhotoAlbum provides plenty of ornament objects with various categories for page decoration. You may choose the ornaments according to the content of your photos.

An ornament object can be placed anywhere on the pages and be resized or rotated by the tools in the Toolbox.

To add an ornament object to the page:

1. Turn to the page you want to add the ornament object with the page control buttons on the status bar.
2. Click on the Ornament button in the Object Pool.
3. Select the ornament category from the row of category buttons, which contains the ornament object you want to use.
4. Decide the ornament you want to use.
5. Drag the ornament object icon into the page and release the mouse button where you want to place the object.

Selecting Texture for the Page

The software can coat the page surface by a specified texture pattern, which produces an outlook as if it were made up with that specific material.

Once you apply texture patterns to the pages, the texture patterns will not be removed when you clear the objects on the pages.

To apply a texture pattern:

1. Turn to the page you want to apply or change the texture pattern with the page control buttons on the status bar.
2. Click on the Texture button in the Object Pool.
3. Select the texture category from the row of category buttons, which contains the texture pattern you want to use.
4. Decide the texture pattern you want to use for the pages.
5. Drag the texture icon inside the page and release the mouse button.

If you drag the texture icon to the desktop area outside the album page, the texture will be applied to the entire desktop as the background of the album.

You can also apply the texture to an object generated by the *Paintbrush*, *Text* and *Text Along Path* tools. All you need to do is to select the object and drag the desired texture icon into it.

Enjoying an Album

When enjoying an album, you can not only view the photos in the album but also listen to any background music or recorded narration attached to the album, pages and photos.

To enjoy an album:

1. In the opening screen, click on the VIEW button.
2. When the *Select an Album* dialog box appears, locate the album you want to enjoy.
3. Click on the [OK] button.

The album will be played back after a moment.

Operation in Playback Screen

When enjoying an album, you can not only view the photos in the album but also listen to any background music or recorded narration attached to the album, pages and photos.

The control bar will be displayed when you move the mouse pointer to the bottom of the screen.

Click on the Preferences button to arouse a dialog box for setting the playback options.

The page control buttons can locate the page you want. If you press and hold the left mouse button on the Previous Page or Next Page button for a while, the page number field at the right will keep on counting until you have reached the page you want and released the mouse button. Therefore you can select to display a specific page immediately without displaying the pages in-between. Click on the Play/Stop button to start or stop playing the pages.

The Print button allows you to print the current page immediately with normal resolution. Clicking the Set Wall Paper button sets the current page as Windows desktop background.

The Quit button allows you to exit the playback program.

When you place the mouse pointer on a photo in the album page, if the pointer changes to the shape of a speaker, it means there is a sound file attached to the photo. Click the right mouse button to play it. If the pointer changes to the shape of linking rings, that means the photo is linked to a specific page. Click the left mouse button to go to the specific page. If the pointer contains both the speaker and the linking rings, you may select to click the left or right mouse button as desired.

The annotation for each photo will be displayed in a pop-up balloon if you move the mouse pointer into the photo and stay awhile.

Playback Preferences

When you click the Preferences button or press the [Enter] key, the following dialog box will pop up for your setting on playing back the album.

Full Screen Display

This option can enlarge the display of album page to the screen size.

Mute

Enabling this option disables the three options in the *Slide Show* section: *Enable Background Music* and *Enable Photo Audio*. All the sound effect will be disabled while playing back the album.

Auto Play on Opening

If this option is enabled, the selected album will be automatically played back next time when you arouse the playback program.

Display Tooltips for Buttons

This option turns on or off the display of on-screen tool tips for illustrating the button functions.

Display Photo Annotation

This option turns on or off the display of pop-up balloons containing photo annotation.

Enable Background Music

This option determines whether to play any background music assigned to the album pages.

Enable Photo Audio

This option determines whether to play any audio attached to the photos.

Auto Replay

When this option is on, the playback program will continue to play from the beginning after you have reached the last page.

Page Flipping Every

This option sets the interval between two pages by seconds while playing back the album.

Save as Default

Click this button to save the current setting as default. Usually the program will use the default setting for operation. The specified options will be loaded when you open the *Preferences* dialog box again. If you have changed the setting and select [OK], the altered setting will take effect temporarily. The default setting will be in charge next time you arouse the playback program.

Sharing the Album on Internet

If you want to share the album with others through Internet, you should place all the files needed for enjoying the album to where you can share with other users.

Copy the entire folder generated by the *For Internet* option of *Deliver* command under the *Album* menu to where you can share with other users on Internet. Other users can enjoy the album with the file **DEFAULT.HTM** (or VIEWER.HTM) by using a network browser as Internet Explorer V3.0 or Netscape Navigator V3.0 (or later).

Acquiring Photos

To input photos in Presto! PhotoAlbum from a TWAIN hardware device:

1. Use the Change Directory button to locate the directory used to hold the new input photos.
2. Click the Commands button and choose the *Option* command from the pop-up menu. The *Option* dialog box appears.
3. In the *Default Saved Name After TWAIN Acquired* option, type in the first few characters for the file names of the new input photos and select the file format from the pull-down list.

The file names will automatically be assigned with 3-digit numbers after the first few characters.

For some of the file formats, you may click on the [Option] button to further specify their format options.

4. If you want the software to correct the colors of the input photos, enable the *Apply Auto-tuning Before Saving* option.
5. Click on [OK] to close the dialog box.
6. Open the Commands menu and select the *Select TWAIN Source* command. A dialog box appears with all the TWAIN sources installed on your system listed in the *Sources* box.
7. From the list of the TWAIN devices, select the one you want to use and click on the [Select] button.
8. Open the Commands menu again and select the *Acquire* command.

A dialog box will appear. The dialog box varies for different devices because manufacturers design their own user interface. You may refer to the user's manual of the TWAIN device for details on inputting images from this dialog box.

After the input process is done, the thumbnail copies of the new photos appear in the Photo Viewer area for your further editing.

Related Topics:

[Option](#)

[Select TWAIN Source](#)

[Acquire](#)

[Loading the Photos](#)

Adding Photos to the Pages

The only way to add photos into the pages is to drag the thumbnail copies of the photos in the Photo Viewer into the frames on the pages. Therefore, you should add frames into the pages before inserting the photos.

If you did not add a frame to the album page before inserting a photo, the software will automatically add a plain rectangle frame fitting the photo dimensions to hold the photo.

The photo in a frame can be changed to another any time as long as you drag another photo from the Photo Viewer into the frame.

To add a photo into the frame:

1. Select the frame you want to use to hold the photo with the *Selection Arrow*.
2. Locate the photo for inserting into the frame in the Photo Viewer of Photo Browser.
3. Drag the thumbnail copy of the photo into the frame.
4. Release the mouse button.

The blank background between the photo and frame can be removed by automatically resizing the frame to fit the photo dimensions. To adjust the frame dimensions to fit the photo size, you should first select the photo, then click the right mouse button and execute the *Make Matching Frame* command from the pop-up menu.

Related Topics:

[Adding Frames to the Album](#)

[Selection Arrow](#)

[Put All Photos](#)

Defining Linking Feature for Objects

Besides the photos inserted into the album, all the ornaments and drawn objects can also be assigned for linking a specific page.

You may define the linking feature for photos, ornaments and drawn objects, so the specified page will be displayed when the object is clicked during the playback process.

1. Select the object you want to assign a linking page.
2. Click the right mouse button and select *Properties* from the pop-up menu.
3. Enable the *Link Page* option.
4. Drag the slider to set the page number, or click on a page control button to choose the first, previous, next or last page for linking.
5. Click on the [OK] button.

Utilizing Your Own Pictures as Ornaments

If you want to utilize a picture made by yourself for using as an ornament object, please note the following instructions:

1. Make the four pixels (arranged as a 2x2 pixel square) at the upper left corner of your picture the same color as the background you want to make transparent for transforming the object in the picture an ornament clipart while producing it.
2. Locate the picture in the Photo Browser and load it into the Photo Viewer.
3. Hold the [Ctrl] key and drag the picture thumbnail into the page.
4. Release the mouse button outside the frame(s).

The background color in the picture will become transparent after you have inserted the picture to the page. The added clipart can be edited as a general ornament object.

Generating Your Own Template

Besides the sample albums and the existing albums, you can generate your favorite album template for producing new albums. For example, you may use one of the page you like in an existing album to create a separate album template and use the format of that page for the entire new album, or make a totally new album and use its format as an album template.

If you want to use one or several page(s) in an album for generating a new template, you may follow these steps:

1. Open the album containing the page(s) you would like to utilize for a new template.
2. In the editing screen, delete other pages you don't need for the new template by the *Delete Page* command in the *Page* menu.
3. Save the album with a new name by the *Save As* command under the *Album* menu.
4. Return to the opening screen by selecting the *Restart* command in the *Album* menu.
5. Select the CREATE button for producing a new album.
6. Select the TEMPLATE button and locate the new album you have saved in step 3.
7. After the album template is loaded into the editing screen, make any change necessary to the pages.
8. Use the commands in the *Page* menu to rearrange the pages in the album. For example, you may duplicate the pages with different formats as you like, change the sequence of pages with different formats, etc.
9. Save the album again.

If you want to generate a totally new album and utilize its format for a template, please follow these steps:

1. Select the CREATE button for producing a new album in the opening screen.
2. Select the CUSTOM button and define the book and ring styles for the new album.
3. After the album is created in the editing screen, add all the elements you like to compose the page, including frames, effects, ornaments, texture, etc.
4. Create as many pages of different formats as you want to use for the album template.
5. Use the commands in the *Page* menu to rearrange the pages in the album. For example, you may duplicate the pages with different formats as you like, change the sequence of pages with different formats, etc.
6. Save the album with a new name by the *Save As* command under the *Album* menu.

On the next time you want to use this album template, you only need to select this new album for opening as an album template by clicking the CREATE button and then the TEMPLATE button in the opening screen.

EXIT

Click on this button to quit the software.

EDIT

Click on this button to load a pre-existing album.

CREATE

Click on this button to create a new album.

VIEW

Click on this button to enjoy an album.

HELP

Click on this button to invoke the on-line help message.

Sound Effect Button

Click on this button to turn on or off the sound effect of program operation.

PREVIOUS

Click on this button to return to last screen.

TEMPLATE

Click on this button to use a pre-existing album format for your new album.

CUSTOM

Click on this button to define the album with totally new format.

Title Bar

Menu Bar

Toolbox

Album Page

Object Pool

Photo Browser

Menu Bar and Title Bar On/Off Button

Click on this button to hide or show the menu bar and title bar.

Message Line

Status Bar

Photo Browser Button

Click on this button to hide or show the Photo Browser.

Object Pool Button

Click on this button to hide or show the Object Pool

Toolbox Button

Click on this button to hide or show the Toolbox.

Current Page Number/Total Pages in the Album

[Go to the Cover Page](#)

[Go to the Previous Page](#)

Go to the Next Page

Go to the Last Page

Go to Any Page You Specify

Commands Button

Recent Folders

Change Directory

Acquire

Photo Viewer

Scroll Button

Menus and Commands

There are several pull-down menus located on the menu bar. Each menu contains a list of commands to execute special functions for image processing.

Choose a menu from the following list to view the command function under it.

Album

Page

Photo

View

Help

Using the Tools

The tools in the Toolbox enable you to make simple artwork for decoration of the album.



Selection Arrow



Object Tool



Paintbrush



Text



Text Along Path

Decorating the Album

The Object Pool allows you to select frame style, special effect, ornament and texture to the pages for decoration. The buttons lined up horizontally are the categories available for each item.

Frame

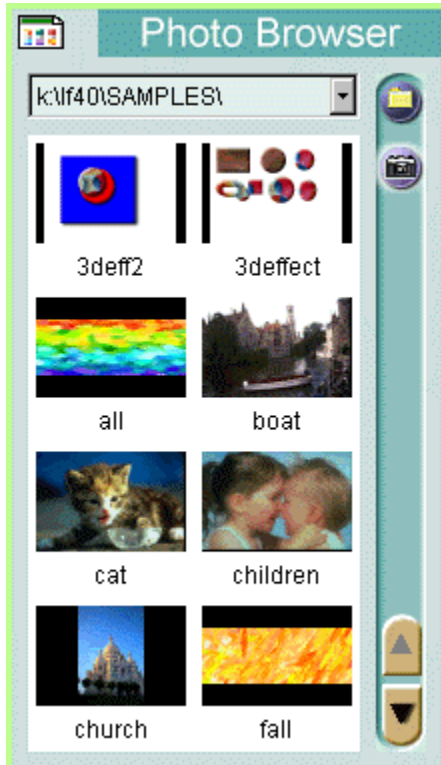
Effect

Ornament

Texture

Loading the Photos

The Photo Browser can display thumbnail copies of the photos, with their filenames, that you want to place into the album.



- | | |
|-------------------------|--|
| Commands | Click this button to bring up several commands for inputting photos, opening photos, setting the photo display options, etc. |
| Recent Folders | Click the down arrow to display a list of folders that were recently used in Photo Browser. |
| Photo Viewer | Display the thumbnail copies of the photos included in the selected folder. |
| Change Directory | Locate a new directory to load the photos for editing. |
| Acquire | Input photos with a TWAIN hardware device. |
| Scroll Buttons | Scroll through upper or lower part in the Photo Viewer to display the photo thumbnails that are not currently visible. |

The following commands are listed in the pop-up menu when the Commands button is clicked.

Hide

Option

Change Directory

Refresh

Select TWAIN Source

Acquire

Photo

Quick Linking

A shortcut button for quick linking is now added at the right bottom of the screen. It lets you link fast into the web site of NewSoft company, and automatically launch into any NewSoft's software that you already have in your computer.

Mailing the HTML Files Directly

If you choose the *For Internet* option under the *Deliver* command for sending the album, the files of the album can now be directly mailed right after formatted. A dialog box pops up when you finish converting the album into HTML format. When you choose the [OK] button, the HTML files will be packed into a .exe file for mailing. Please refer to the *Delivering the Album by E-mail* section for detailed operation on sending an album by e-mail.

Delivering the Album by E-mail

After an album is finished, you may share it with your friends and family by e-mail. Presto! PhotoAlbum lets you convert an album that has been saved in HTML format, into exe file format for e-mail attachment. To deliver an album:

1. Choose *Deliver* from the *Album* menu.
2. Choose the *By E-mail* option from the pop-up sub-menu.
3. When the *Choose Directory* dialog box appears, locate the directory where the previously formatted HTML files of the album are stored on.
4. Click the [OK] button.
5. A *MailPack* dialog box pops up. Choose an electronic mail system you are familiar with, or choose the *Save* option to pack your album files for another similar application.
6. Click the [OK] button

The E-mail system you selected will be launched automatically, and your album packed as an exe file will also be attached in it. After you have finished the document, send it. Double clicking on the attached file, the recipient can enjoy your album without any file format problem.

